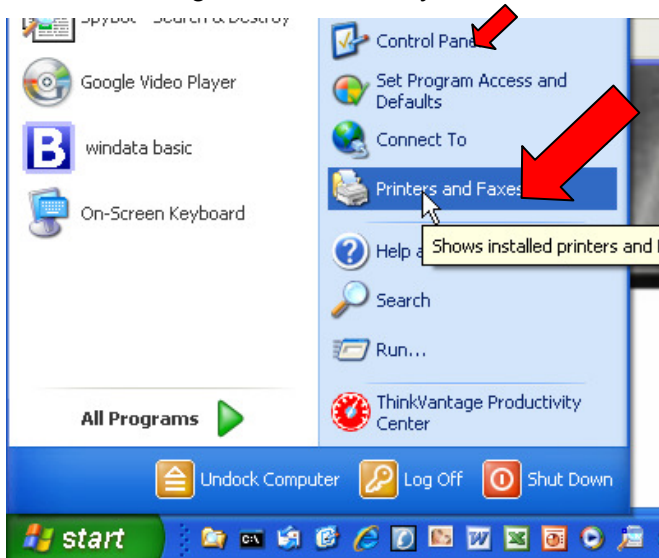


# Installation from a visitor colour-printer on your notebook



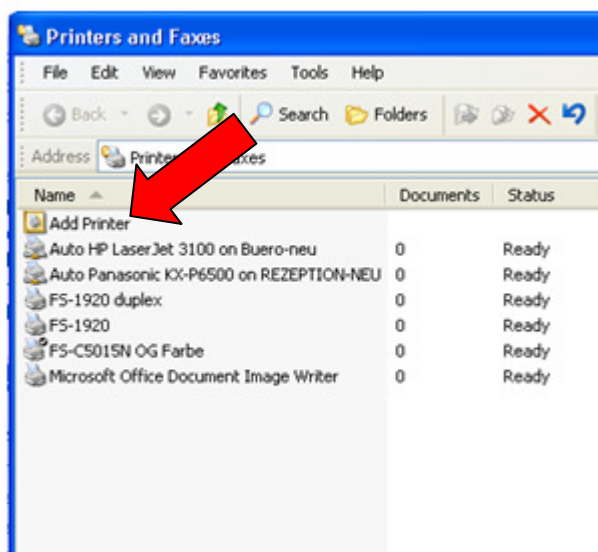
## 1. Select printer and fax machine in windows-start-menu

Go to the front side of windows and use the „start-button“, then choose „printer and fax machine“. If the menu does not list the item „printer and fax machine“, go to the folder „system control“ and choose „printer and fax machine“.



## 2. Add a new printer

Choose on the left site of the page „add printer“. After that a new window opens from the printer installation assistant. Click „next“.

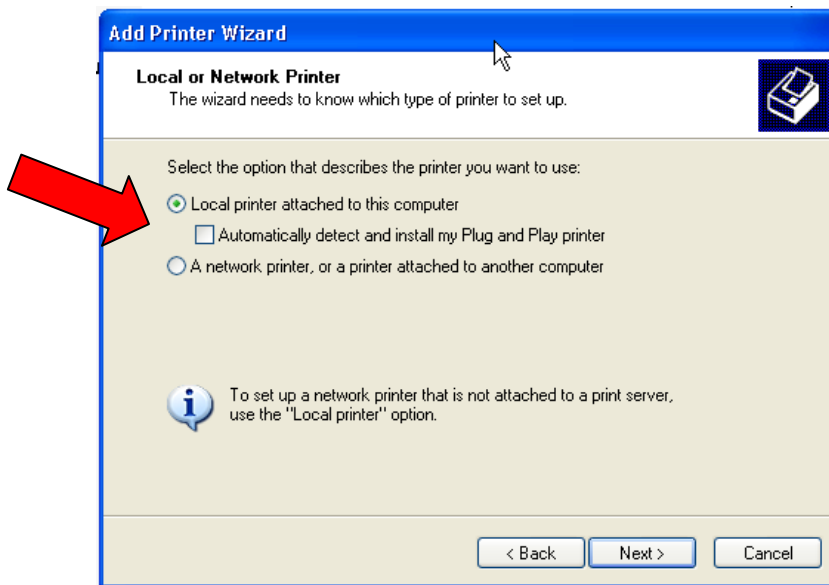


# Installation from a visitor colour-printer on your notebook



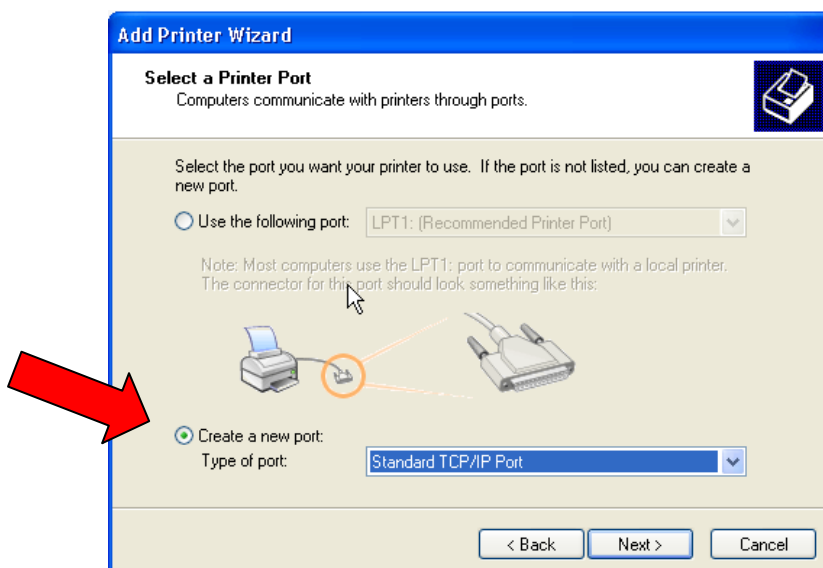
### 3. Create a local printer

Choose the option „local printer, which is connected with the computer“ and remove the check „plug & play printer automatically detect and install“. Now choose „next“.



### 4. Create a new TCP/IP access

Click at the following window „create a new access“ and choose at the drop-down menu the accesspoint „standard TCP/IP Port“. Click at the button „next“.



# Installation from a visitor colour-printer on your notebook

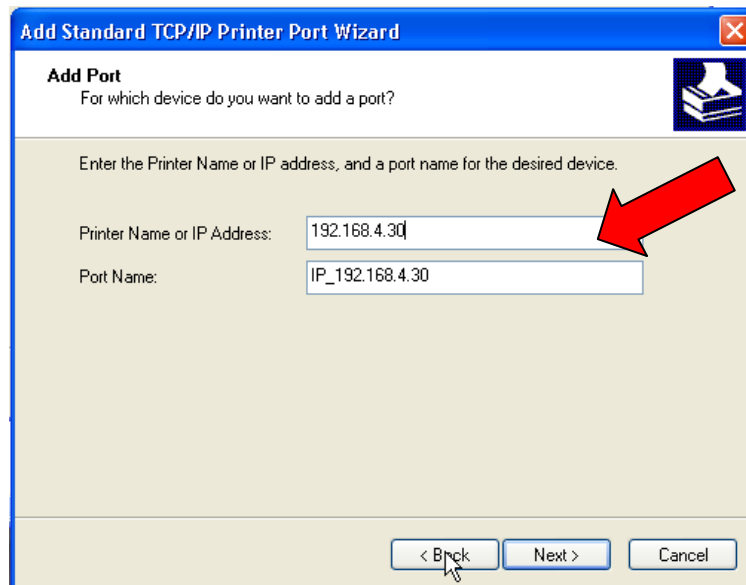


## 5. Specify the name of the printer and the IP-address

Insert the IP-address from the new printer.

**IP-address: 192.168.4.30**

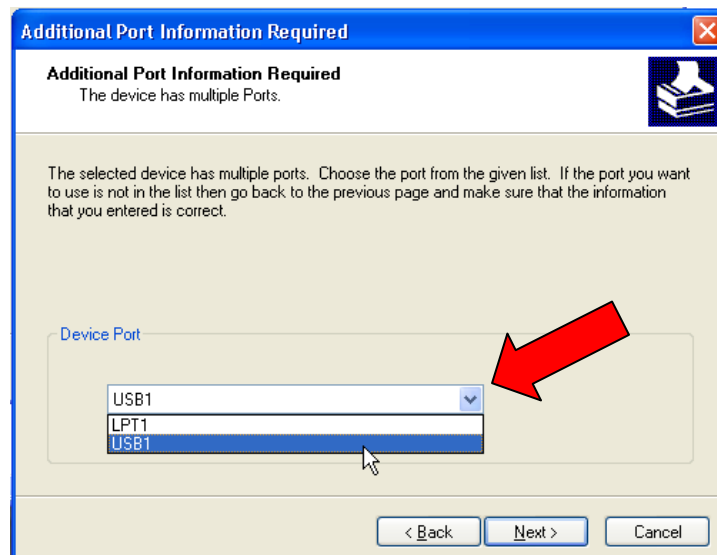
The field „Portname“ is filled automatically. Continue the installation of the printer with a click on the button „next“.



## 6. Add the accessory port information

Choose in the drop-down menu the port „USB1“ and confirm this with a click on the „next“ button.

**1**

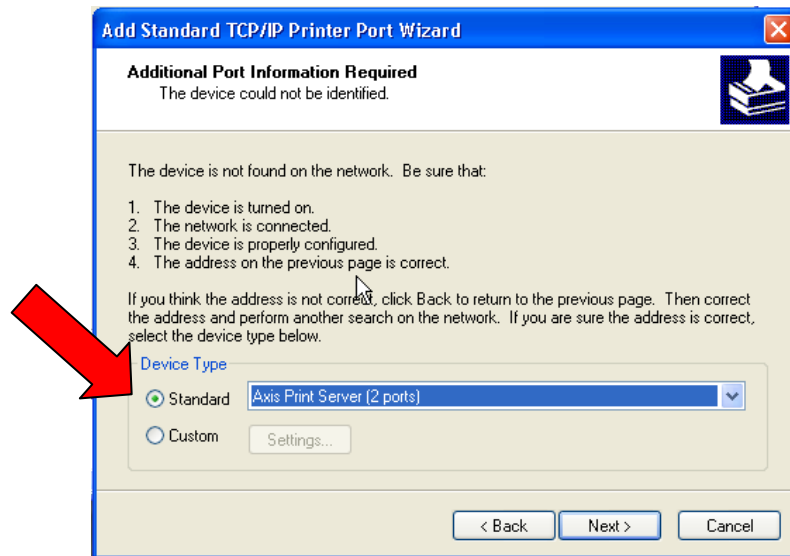


## Installation from a visitor colour-printer on your notebook



Attention: If the device type is not automatically found, the following window opens:

**2**



Choose as the standard device type the model „Axis Print Server (2ports)“ and confirm that with „next“. (Attention: Choose the third “Axis Print Server (2ports)” from the list.)

After that you will be asked again for the port. (take a look at picture 1 in point 6 of the description – add the accessory port information)

Choose also the port „USB1“.

Confirm the following window with a click on the button „complete“, to finish the installation.

## Installation from a visitor colour-printer on your notebook

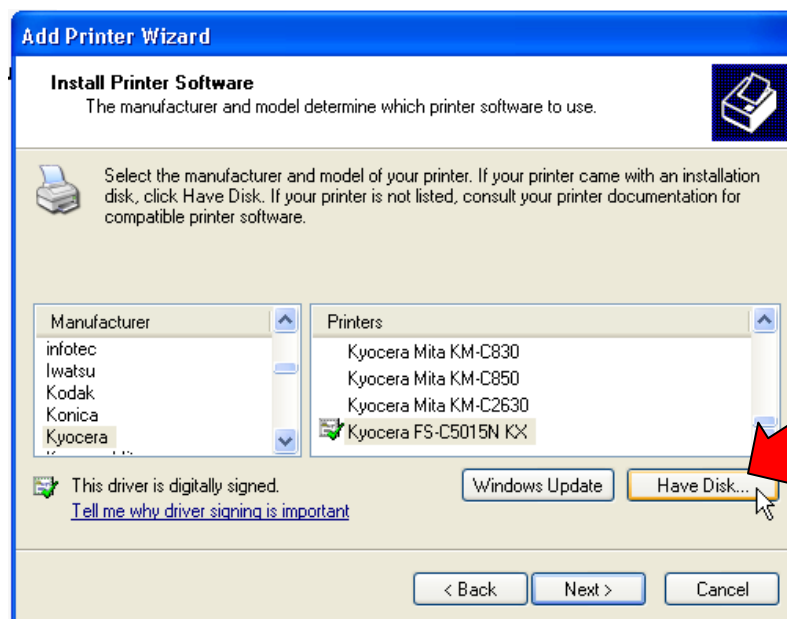
### 7. Now install the print configuration

You can download the print configuration on [www.zum-zacherl.de/printer](http://www.zum-zacherl.de/printer).

Save the print configuration for the printer „Kyocera FS 5020N“ on your notebook.

Now you can select the print configuration at the point „medium“ from your hard disk.

Confirm this step with „next“.

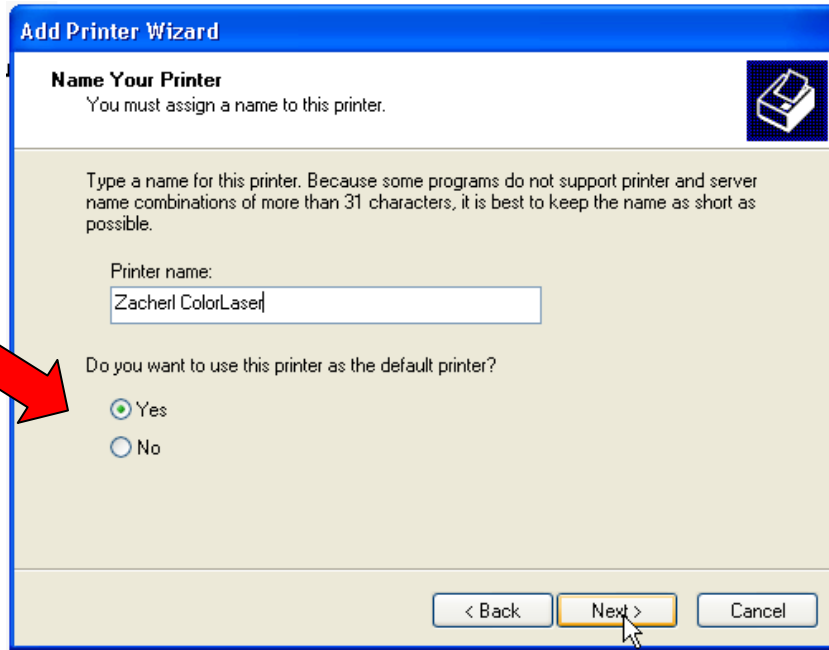


# Installation from a visitor colour-printer on your notebook

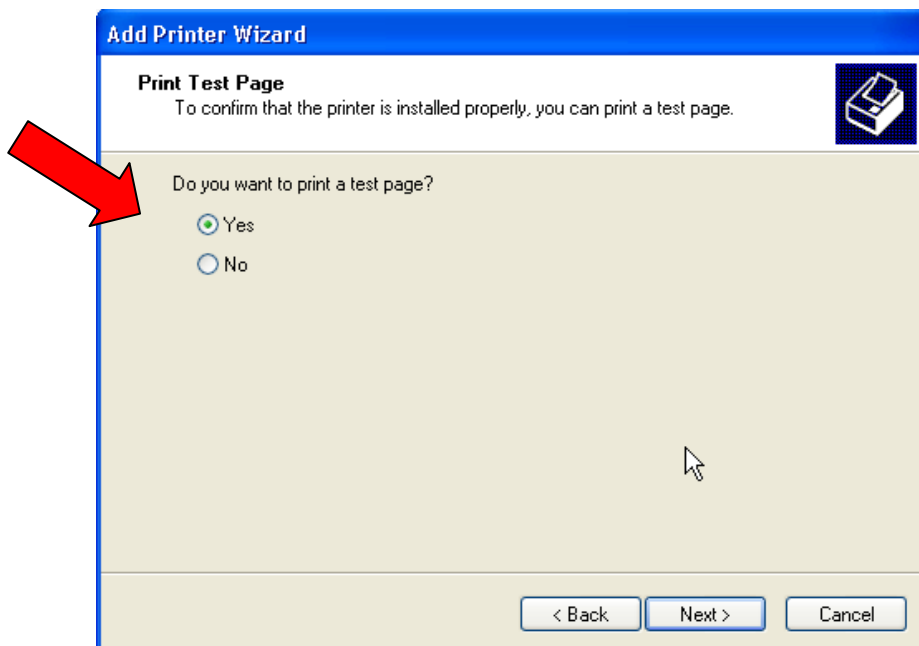


## 8. Name the printer

Give a name to the new installed printer (for example “Zacherl colour-printer”) and select it as „standard printer“.



## 9. Print a test page!



## Installation from a visitor colour-printer on your notebook



When you confirm the shared name with the button „next“, you will be asked, if you want to print a test page. You can confirm the question with „no“ and a click on the button „finish the installation“.



Now you have successfully installed the new printer.  
You can receive your prints at the reception of our hotel.